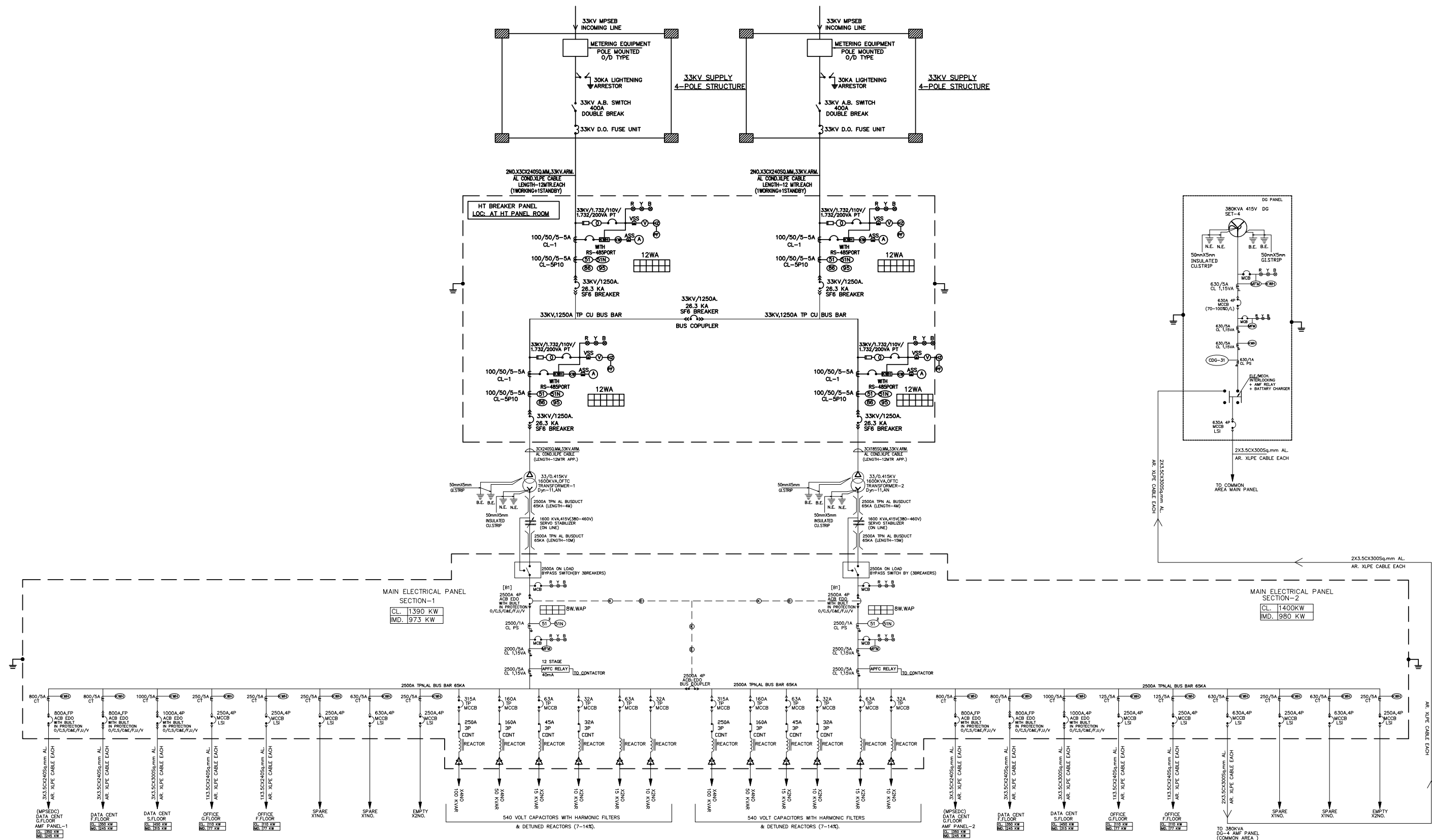


SINGLE LINE DIAGRAM



TYPE - FLOOR MOUNTED, FREE STANDING, VERMIN/DUST PROOF DESIGN - COMPARTMENTISED, EXTENSIBLE AT BOTH SIDES GLAND PLATES AT TOP & BOTTOM, FRONT OPERATED & BACK MAINTENANCE PANEL MANUFACTURER SHALL INDICATE FINAL DIMENSIONS WORKED OUT BY HIM FOR PANEL. PANEL MANUFACTURER HAS TO SUBMIT 3 COPIES OF GA DWG. DWG SHALL BE APPROVED BEFORE FABRICATION.

- A.)-CONTACTOR SELECTED SHALL BE AC3 DUTY AND ONE SIZE HIGHER THAN TYPE-2 COORDINATION
- B.) ALL MCCB UP TO 160A SHALL HAVE THERMAL RELEASE SETTING(70-100%).
- C.) ALL MCCB ABOVE TO 250A SHALL HAVE MICROPROCESSOR BASE RELEASE SETTING.
- D.) SWITCHGEAR RATING SHALL FOLLOW FAULT LEVEL AT EACH PANEL. NO DEVIATION SHALL BE ALLOWED.
- E.) PANEL SHALL BE MADE STRICTLY AS PER SPECIFICATION. NO DEVIATION SHALL BE ALLOWED.

- 1) AUTO POWER FACTOR METER SHALL HAVE AUTO/MANUAL OPERATION SELECTOR, LOCAL PUSH BUTTONS POWER FACTOR INDICATION, INDICATION FOR CAPACITOR ON/OFF ETC
- 2) ALL CONTACTORS ARE OPERATED THROUGH APFRC RELAY WITH AUTO/MANUAL CONTROL FACILITY
- 3) EACH CAPACITOR FEEDER SHOULD HAVE ON/OFF PUSH BUTTON WITH INDICATOR FOR CAPACITOR 'ON'
- 4) TIME DELAY FOR FREQUENT SWITCHING SHALL BE PROVIDED WITH TIMER IN EACH FEEDER.
- 5) CAPACITOR HOUSING SHALL BE PROVIDED AS INTEGRAL PART OF PANEL AND SHALL HAVE COMPLETE VENTILATION ARRANGEMENT

NOTE :- THIS DRAWING IS COPYRIGHT OF N.V. BHALE & ASSOCIATES IS NOT TO BE REPRODUCED, HANDED OVER TO OTHER PERSON OR USED FOR ANY PURPOSE OTHER THAN THAT FOR WHICH IT HAS BEEN GIVEN OUT.

REV. NO.	DESCRIPTION/REMARK	DATE	COPY
01	AS PER DISCUSSION	26.11.2010	01
02	AS PER DISCUSSION	18.03.2011	01

CLIENT :- TENDER DWG.  
PROJECT CODE :- EC/NVB/SEP/01

ELECTRICAL SERVICES CONSULTANTS:  
**N.V. BHALE & ASSOCIATES**  
ELECTRICAL CONSULTANTS  
HEAD OFFICE:  
240, LOMNAYA NAGAR, KEARBAUS ROAD, JODHPUR, RAJ.  
TEL: 2469177, FAX: 0731-2469177.  
E-MAIL: nvb@nvs.com

PROJECT :- NETWORK MONITORING CENTRE MPSEDC AT BHOPAL, M.P.  
TITLE :- MAIN ELECTRICAL PANEL  
DRAWN BY: [Signature]  
CHECKED BY: N.V.  
PREPARED ON: 26.11.2010  
RELEASED DATE: 18.03.2011

ARCHITECT:  
**KUSHWAH & KUSHWAH**  
P-279, Shilpgram, Bhopal, 462009, India  
Tel: 91-755-254-455, 254-456, 254-457-458-459  
Email: kushwah\_kushwah@gmail.com